

# ABPM

## Product Information

The Dialog<sup>+</sup>/ Dialog Advanced dialysis machine can be equipped with an automatic blood pressure measurement (ABPM) function. ABPM non-invasively monitors blood pressure by the oscillometric method. ABPM – your "Monitoring Assistant" – makes vital sign monitoring easier and gives you more time to attend to your patients. ABPM produces extremely precise and reliable readings. Your "Monitoring Assistant" automatically adapts cuff inflation pressure and alarm limits to each patient and blood pressure.

### Benefits:

- Easy BP measurement at all times – before, during and after dialysis
- Automatic readings at regular intervals
- BP and pulse rate are clearly displayed on the main screen
- Alarm limits can be individually adapted to patient's blood pressure
- Selectable color display for blood pressure and pulse curves
- Real-time documentation of all readings
- Automatic cuff inflation adjustment

### Technical data:

#### Blood pressure measurement range

Systole (SYS):45 – 280 mmHg  
Diastole (DIA):15 – 220 mmHg  
MAP:25 – 240 mmHg  
Accuracy:±3 mmHg or ±2%

#### Individual setting of limits

Alarm limits:	±30 mmHg around the last measured value
In critical range:	±20 mmHg around the last measured value
Measuring time:ca. 28 s	(adult with blood pressure of 120/80 mmHg and 80 BPM)

Cuff pressure range:0 – 300 mmHg  
Default target cuff inflation:200 mmHg  
Following cuff inflation:last SYS + 30 mmHg  
Overpressure cut off:300 mmHg + 10 %  
Pulse rate determination:30 – 240 BPM  
Pulse rate accuracy:±2 % or 2 BPM

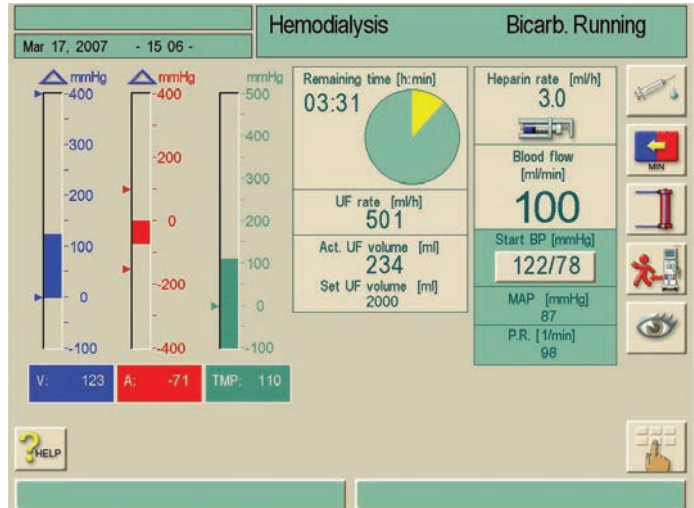
#### MachineOptionArticle number

Dialog AdvancedOption ABPM7109226	
Dialog <sup>+</sup>	Option ABPM7105226

#### Cuffs latex freeArticle number

small	7102372
medium	7102771
large	7102380

Therapy mode main screen



Graphical display of BP Values

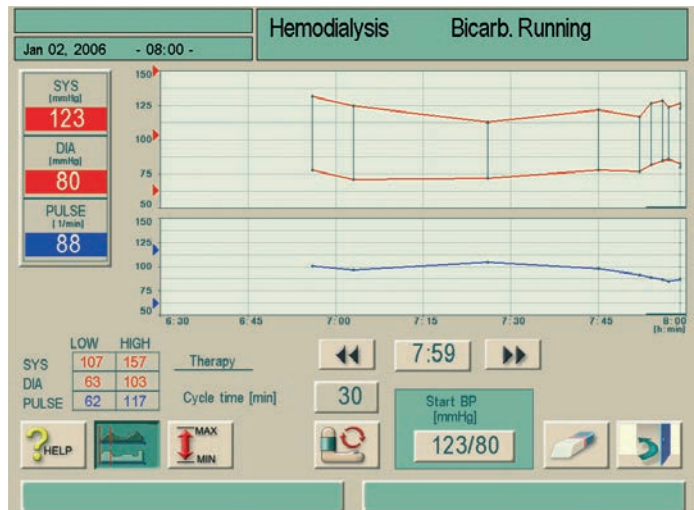


Table of BP Values

**Hemodialysis Bicarb. Running**

Jan 02, 2006 - 08 01 -

Time [h : min]	Systolic [mmHg]	Diastolic [mmHg]	MAP [mmHg]	Pulse rate [1/min]
07 : 59	123	80	99	88
* 07 : 59	127	83	98	87
* 07 : 57	124	86	101	85
* 07 : 56	129	85	101	87
* 07 : 55	---	---	---	---
07 : 54	127	82	102	89

Cycle time [min] 30

Start BP [mmHg] 123/80

HELP

**B | BRAUN**  
SHARING EXPERTISE

B. Braun Avitum AG  
Schwarzenberger Weg 73-79  
34212 Melsungen  
Germany  
Tel +49 (56 61) 71-2624  
Fax +49 (56 61) 75-2624  
e-mail: dialysis@bbraun.com  
www.bbraun-dialysis.com