

Dialog⁺ Accessories

Functional. Ideal. Original.



Facilitate treatment. Streamline workflows.
Enjoy security. Use original Dialog⁺ accessories.

Dialog⁺

Combi Shelf-Holder

Place e.g. Infusomat® or Perfusor® on this removable shelf-holder located behind the monitor. Features a built-in recessed holder for small parts.



Holder or Basket for Blood Pressure Cuff*

Hang the blood pressure cuff on this convenient holder on the side of the dialysis machine.

Store blood pressure cuff in a basket on left side of the dialysis machine.



Concentrate Bag Holder*

Holder for hemodialysis concentrates in bags.



Record Holder*

Record holder keeps the patient record and documents at ready.



* Not available in combination with each other.

Functional. Ideal. Original.

Inspired by users, developed by systems specialists. Discover Dialog⁺ accessories in B. Braun branded quality: Design for ideal functionality. Dialog⁺. The original.



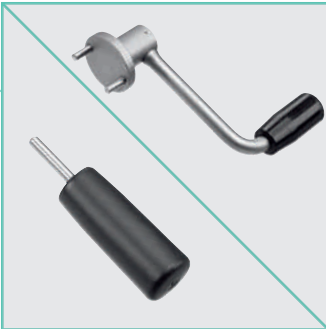
Dialyzer Holder

Swivel aluminum dialyzer holder including holder for bloodlines.



Monitor Mini-Shelf

Removable Monitor Mini-Shelf for small parts such as syringes or clamps. Located below the monitor.



Crank / Crank Pin

Use crank or crank pin to manually operate blood pump in case of power failure.



Connector for Concentrate Bag

Kit for connecting hemodialysis concentrate bags to the concentrate rod of the Dialog⁺.

Sample Port

The dialysis fluid sample port is integrated into the dialyzer inlet tubing. Direct, needle-free sampling of dialysis fluid is possible with a syringe.



Holder for Disinfecting Agent Canisters

Stand mounted on the rear panel of the Dialog⁺ machine holds canisters with 6 or 10 liters of disinfecting agent.



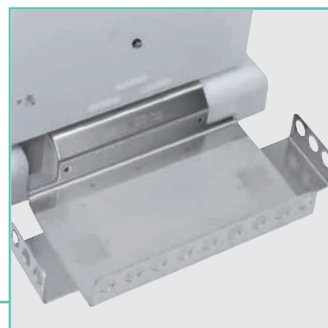


box / box comfort

The multifunctional box has a slot for storing patient records and a separate tray to hold all the disposables.



The box comfort version features a wider tray for broader patient records. Coloured rings can be used for labeling the treatments etc.



Universal Storage Tray

Tray on rear panel for storing a single-site osmosis system or, alternately, two 10-liter canisters of disinfecting agent. Only available for Dialog⁺ standard machines.

Product Specifications

Hemodialysis

Product Code	Product Description	Packaging Unit
7107320	box	3 units plus 4 red, 4 blue and 4 lucent rings
7107322	box comfort	3 units plus 4 red, 4 blue and 4 lucent rings
7102871	Combi Shelf-Holder	1 unit
7102869	Non-skid padding for the Combi Shelf-Holder	1 unit
7102872	Monitor Mini-Shelf	1 unit
7102873	Record Holder	1 unit
7105500	Universal Storage Tray	1 unit
7102877	Concentrate Bag Holder	1 unit
7210783	Connector for Concentrate Bag	15 units
7107275	Holder for 6 liter Disinfecting Agent Canister	1 unit
7107277	Holder for 10 liter Disinfecting Agent Canister	1 unit
7102868	CCS connector for 3 concentrates	1 unit
7102781	Holder for Blood Pressure Cuff	1 unit
7102865	Basket for Blood Pressure Cuff	1 unit
7102372	ABPM Cuff latex-free, incl. Tubing, small	1 unit
7102771	ABPM Cuff latex-free, incl. Tubing, medium	1 unit
7102380	ABPM Cuff latex-free, incl. Tubing, large	1 unit
34560157	Crank Pin for the Blood Pump	1 unit
34518355	Crank for the Blood Pump	1 unit
7107426	Dialyzer Holder	1 unit
7102876	Sample Port AP version	1 unit
7102867	Sample Port ROW version	1 unit



B. Braun Avitum AG

Schwarzenberger Weg 73-79
34212 Melsungen
Germany

Tel +49 (56 61) 71-26 24

Fax +49 (56 61) 75-26 24

e-mail: dialysis@bbraun.com

www.bbraun-dialysis.com